



NAYE INDIA KI AMAZING

Shine 125



Experience the comfort, style, and tech with the

all-new

Shine ***125***

where trust and reliability meet technology.

Make a statement with an all-new cutting-edge Fully Digital Meter and wider rear tyre for better traction.

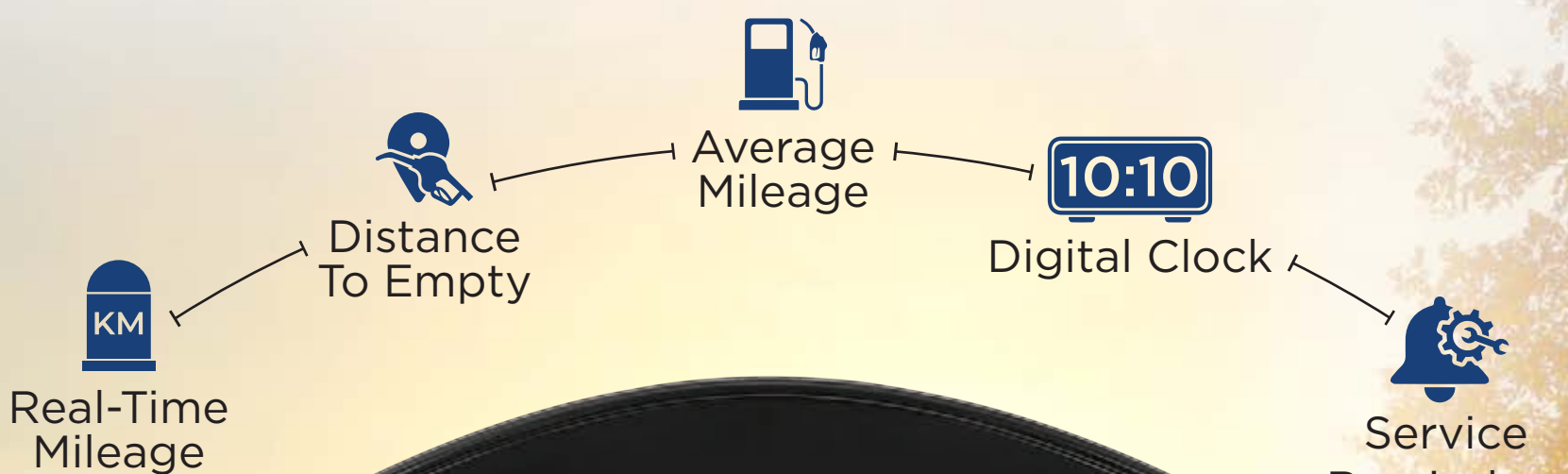
The OBD2B-compliant engine keeps emissions in check. Conquer city traffic effortlessly with the Idling Stop System empowering with better mileage, while the USB-C port keeps your devices powered up-ensuring nothing slows you down.



THE NEW AMAZING TECHNOLOGY

New Fully Digital Meter

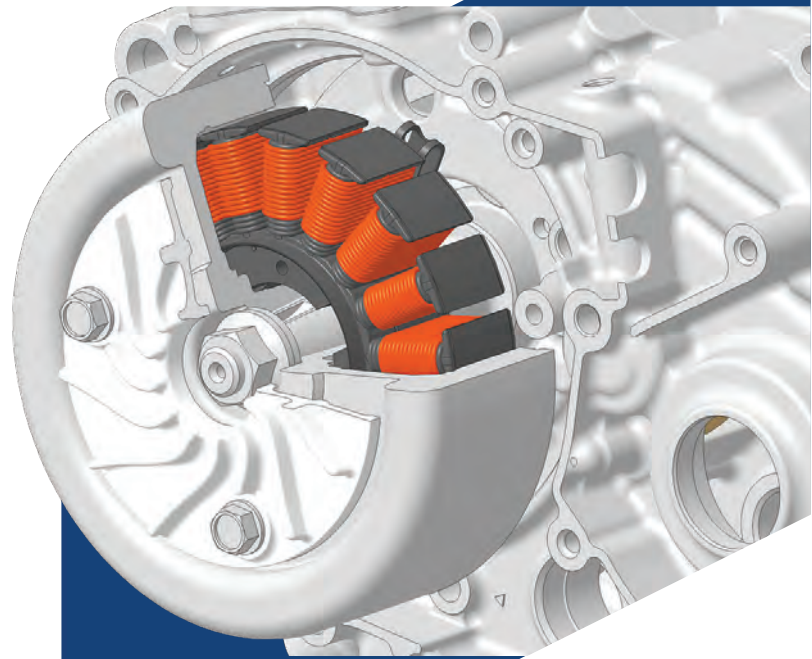
A premium Fully Digital Meter engineered for precision and efficiency. It offers real-time and average mileage tracking, range, service reminders, gear position display, digital clock, fuel level monitoring, and an eco-indicator delivering a seamless, data-driven riding experience.





Idling Stop System

Automatically shuts off the engine during short stops, improving fuel efficiency and making city rides effortless.



Silent ACG Starter

Honda's advanced ACG starter motor eliminates gear meshing noise, ensuring a seamless start.



eSP

Honda's Enhanced Smart Power (eSP) technology ensures top-notch performance and fuel efficiency by minimizing friction.



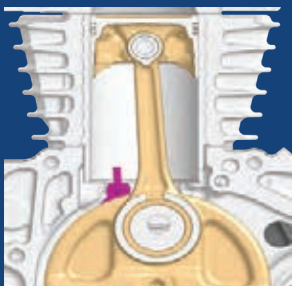
PGM-FI
FUEL INJECTION

PGM-FI

The cutting-edge Fuel Injection System dynamically adjusts the air-fuel mix for optimized efficiency.

125cc BS VI OBD2B compliant engine

A future-ready engine that delivers outstanding performance while being environmentally friendly.



Friction Reduction

Piston cooling jet, offset cylinder, and rocker roller arm work together to minimize friction and maintain ideal engine temperature.

THE NEW AMAZING COMFORT & CONVENIENCE



Honda

**EXTENDED
WARRANTY**

**10 YEAR*
COVERAGE**

3+7 Years Warranty Package

*Attractive 10 years warranty package, comprising 3 years standard and 7 years optional service warranty.



5-Speed Transmission

Enjoy a smooth yet thrilling ride with the 5-speed transmission.



15W USB-C Port

Enjoy your ride. It provides charging to your smartphone, power bank, earphones on the go.

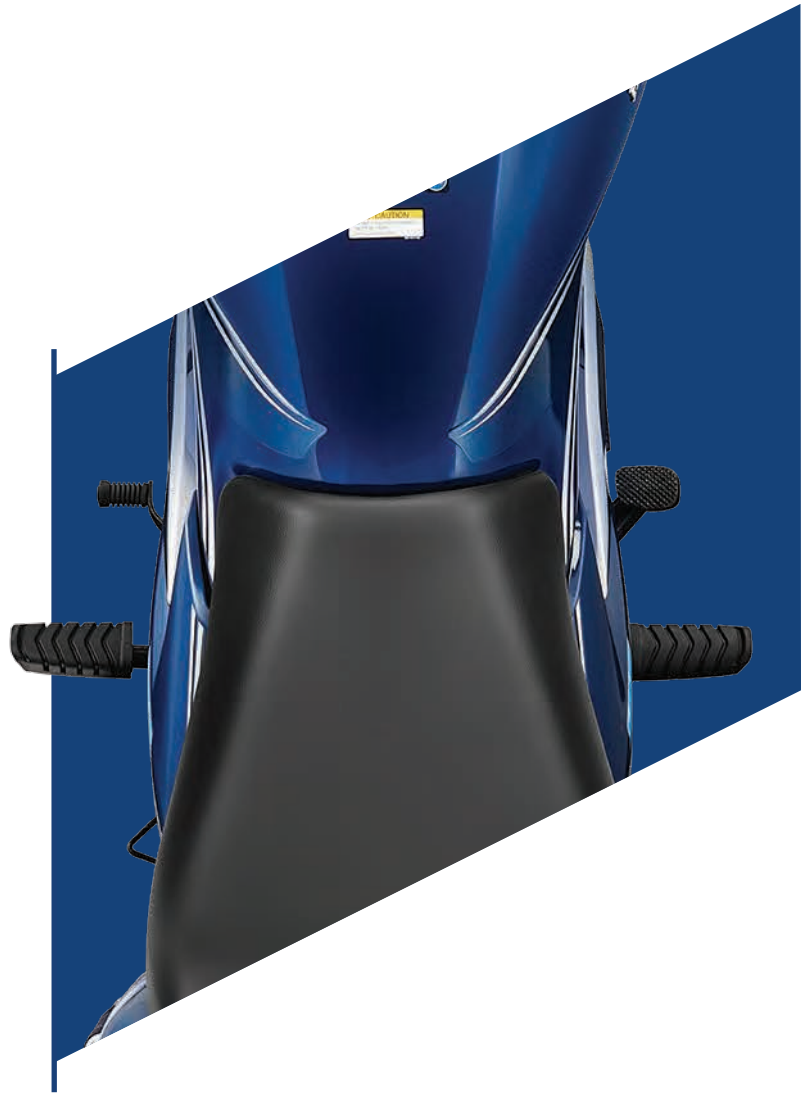


Integrated Headlamp Beam & Passing Switch

A smart single switch for easy toggling between high/low beam and passing signals.

Seamless Seat Tank Integration

Optimized seat and tank design enhance comfort and ground reach.



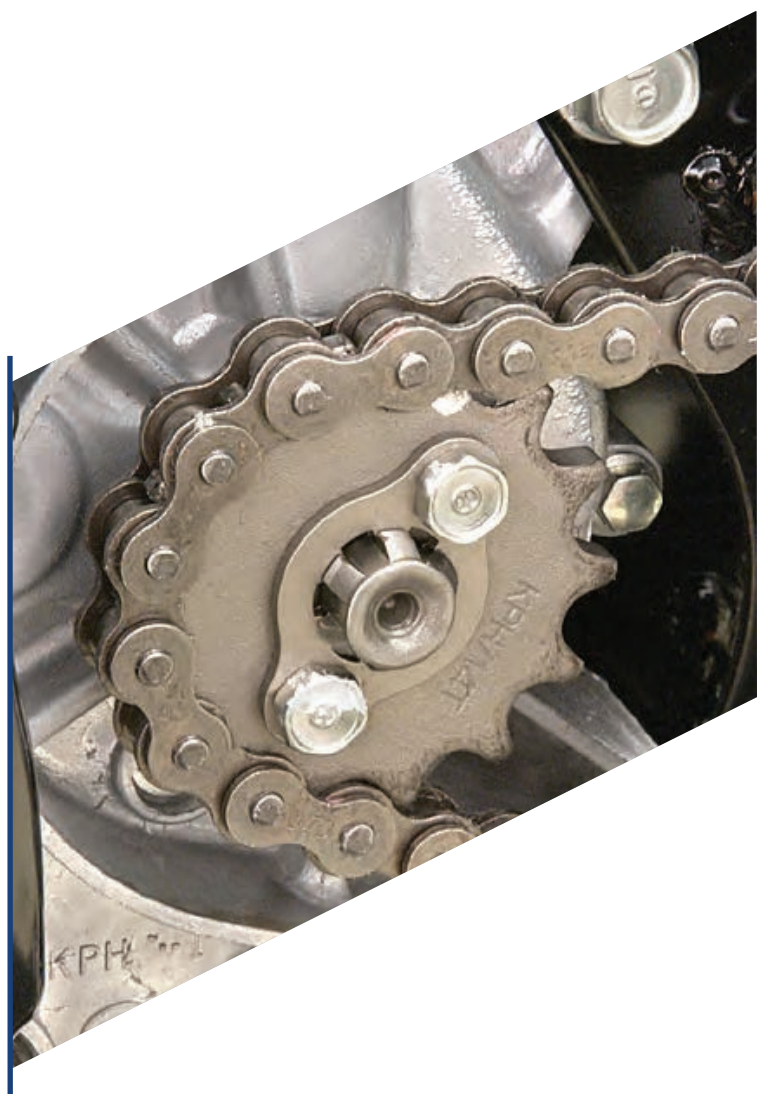
CBS with Equalizer

The Combi-Brake System shortens braking distance and improves stability.



Seal Chain

Low-maintenance, highly durable chain for a hassle-free ride.





High Ground Clearance

162 mm ground clearance allows smooth passage over rough roads and potholes.

Long Wheelbase

A 1285 mm wheelbase enhances stability, especially at higher speeds.



1285 mm



New Wider Rear Tyre

A 90 mm rear tyre provides superior grip and control while accelerating or braking.

Long & Comfortable Seat

A spacious 651 mm seat ensures comfort for both rider and pillion, ideal for long journeys.



5Ah MF Battery

High-capacity, maintenance-free battery supports DC headlamps and offers a longer lifespan.



Side Stand Indicator with Engine Cutoff

Prevents engine start when the side stand is engaged, enhancing safety.



Viscous Paper Filter

A low-maintenance air filter that requires replacement only every 18,000 km.

THE NEW AMAZING STYLE





Stylish Front Chrome Visor

A stylish front visor with chrome garnish adds a striking look.

Aero-Type Fuel Cap

A sleek fuel cap design adds both style and practicality.



Elegant Tail Lamp

A signature tail lamp gives the Shine a unique identity.





Premium Chrome Side Covers

Elegant chrome accents on the side covers enhance the Shine's premium stance.



Magnificent Graphics

Stylish graphics elevate the bike's dynamic appeal.





Attractive Chrome Muffler Cover

A chrome-plated exhaust muffler gives an elegant stance, to make Shine stand out in the crowd.



Trendy Black Alloy Wheels

All-black alloy wheels enhance road presence with a stylish look.





Body Dimensions

Length	2046 mm
Width	Drum-728 mm , Disc-741 mm
Height	1116 mm
Wheel Base	1285 mm
Ground Clearance	162 mm
Kerb Weight	113 kg
Seat Length	651 mm
Seat Height	791 mm
Fuel Tank Capacity	10.5 L



Engine

Type	4 Stroke, SI, BS-VI Engine
Displacement	123.94 cc
Max Net Power	7.93 kW@ 7500 rpm
Max Net Torque	11 N-m @ 6000 rpm
FuelSystem	PGM-FI
Bore x Stroke	50.00 X 63.121
Compression Ratio	10.0:1
Starting Method	Self/Kick



Transmission

Clutch Type	Multiplate Wet Clutch
No. of Gears	5



Tyres & brakes

Tyre Size & Type (Front)	80/100-18 M/C 47P
Tyre Size & Type (Rear)	90/90-18 M/C 51P
Brake Type & Size (Front)	Disc-240 mm , Rear-130 mm
Brake Type & Size (Rear)	Rear-130 mm



Frame & Suspension

Frame Type	Diamond Type
Front Suspension	Telescopic
Rear Suspension	Hydraulic type



Electricals

Battery	12V, 5Ah
Head Lamp	Halogen Bulb, DC

+The technical specifications and design of the vehicle may vary according to the requirements and conditions without any notice • Shine meets Bharat Stage VI norms • Product shown in the picture may vary from actual product available in the market • Accessories shown in the picture are not part of standard equipment. **Conditions apply.



FEATURES	DRUM	DISC
Fully Digital Meter	✓	✓
Eco Indicator	✓	✓
Real Time Fuel Efficiency	✓	✓
Average Fuel Efficiency	✓	✓
Range (Distance To Empty)	✓	✓
Trip A and Trip B	✓	✓
Service Due Indicator	✓	✓
Universal USB-C Type Charging	OP	✓
Idling Stop System	✓	✓
Silent Start With ACG	✓	✓
Side Stand Engine Cut-off	✓	✓
Integrated Headlamp Beam & Passing Switch	✓	✓
5-Speed Transmission	✓	✓
5-Step Adjustable Rear Suspension	✓	✓
CBS with Equalizer	✓	✓
Seal Chain	✓	✓
Wider Rear Tyre	✓	✓
More Ground Clearance & Wheelbase	✓	✓
All Black Trendy Alloy Wheels	✓	✓
Premium Chrome Muffler Cover	✓	✓
Premium Chrome Stroke on Side Covers	✓	✓
Bold Front Chrome Visor	✓	✓
Front Disc Brake	✗	✓

THE NEW AMAZING COLOURS

Decent Blue
Metallic



Pearl Siren
Blue



Geny Gray
Metallic



Rebel
Red Metallic



Matte Axis
Gray Metallic



Pearl Igneous
Black



AKD Honda
Plot no: 327, Jalangi Road
Berhampore
Tel: 8017656880
Mob: 9083809476, 8372817457

Honda Motorcycle and Scooter India Pvt. Ltd.

Registered Office: Plot No. 1 , Sector - 03, IMT Manesar, Distt. Gurugram, (Haryana) – 122050, India

For more details:

Visit us at: www.honda2wheelersindia.com | Customer Care: customercare@honda.hmsi.in

Follow us at :



[honda2wheelers.in](https://www.facebook.com/honda2wheelers.in)



[honda2wheelerin](https://www.instagram.com/honda2wheelerin)



[honda2wheelersin](https://www.youtube.com/honda2wheelersin)



[honda2wheelerin](https://twitter.com/honda2wheelerin)